

Datasheet

GTM-521XF Series

3D TouchPrint® Optical Fingerprint Recognition *EMBEDDED* Module

Version 1.6

Jun 5th, 2019

GINGY TECHNOLOGY INC.
No.1,Lixing 1st RD,
Science Park,HsinChu,
30077,Taiwan,R.O.C.
TEL: 03-563-2500
<http://www.gingytech.com.tw>

Table of content

Table of content	3
1. General Description	4
2. Feature.....	5
3. Specification	6
4.Module Dimension.....	8
5.Pin Assignment	10
6.Part Number	11

1. General Description

The GTM-521XF Series are high performance fingerprint module *with wake up on finger function* developed by GingyTech Inc. It is one chip fingerprint module designed for integration into products with UART interface.

The active area allows stable imaging and ability to cope with mass-market applications in need of both security and convenience.

The reader within the Holtek HT32F22366 device is high performance, low power consumption 32-bit microcontrollers based around an ARM® Cortex™-M3 processor core and the fingerprint algorithm is processed on it.

2. Feature

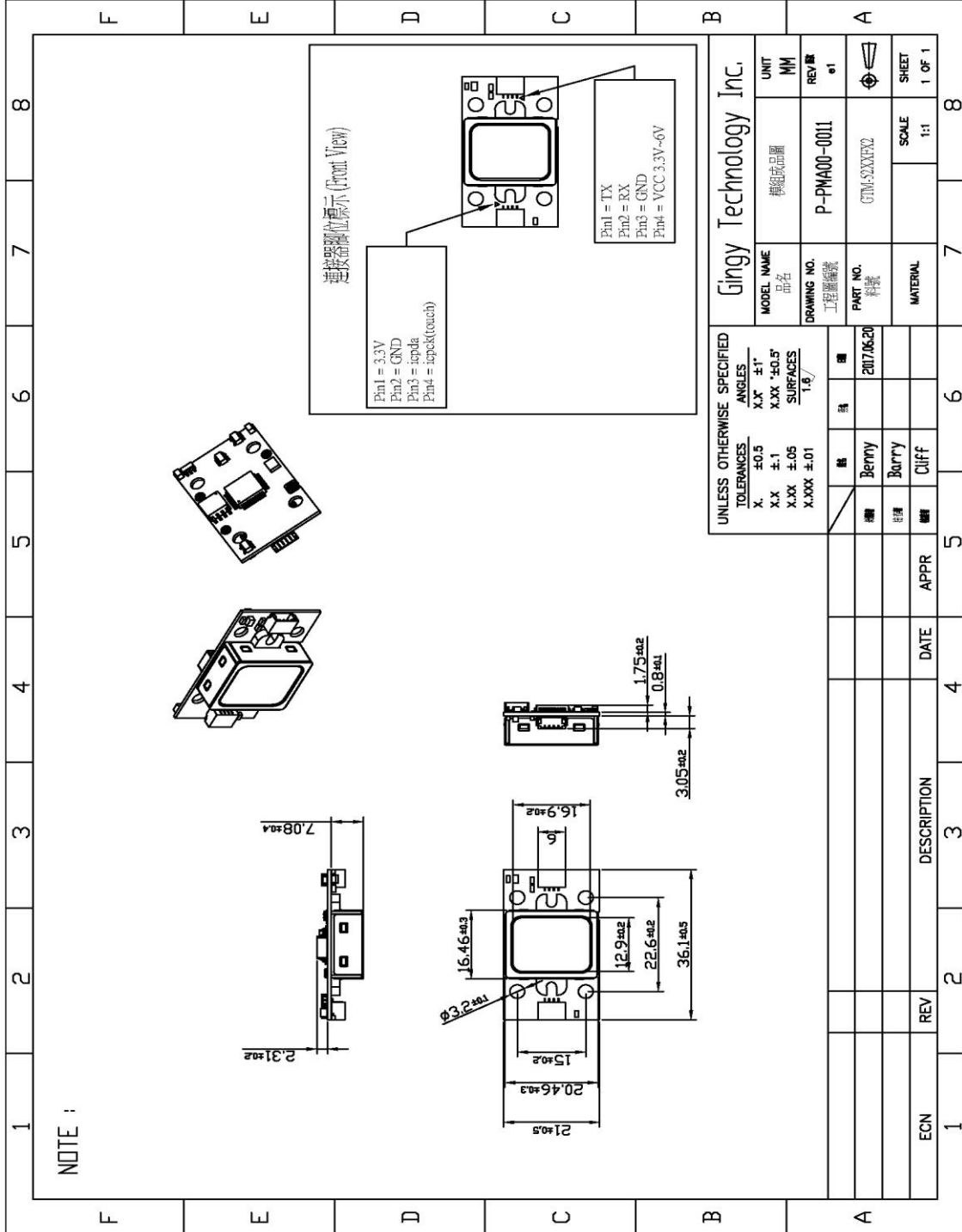
- **Simple UART communication protocol**
- **Ultra-thin Optical Sensor**
- **Resolution 450 DPI**
- **GTM-5210F52/GTM-5210F5 3000 fingerprints storage, GTM-5210F32/GTM-5210F3 200 fingerprints storage**
- **Wake up on Finger Function**
- **Works well with dry, moist or rough fingerprints**
- **Anti-Scratch with surface high hardness $\geq 5H$**
- **1:1 verification, 1:N identification**
- **Reading & writing fingerprint template(s) from/to the device**
- **High-accuracy and high-speed fingerprint identification technology**
- **Downloading fingerprint image from the device**
- **Convenient & Safe & Facilitation—Just one touch and easy to enroll**

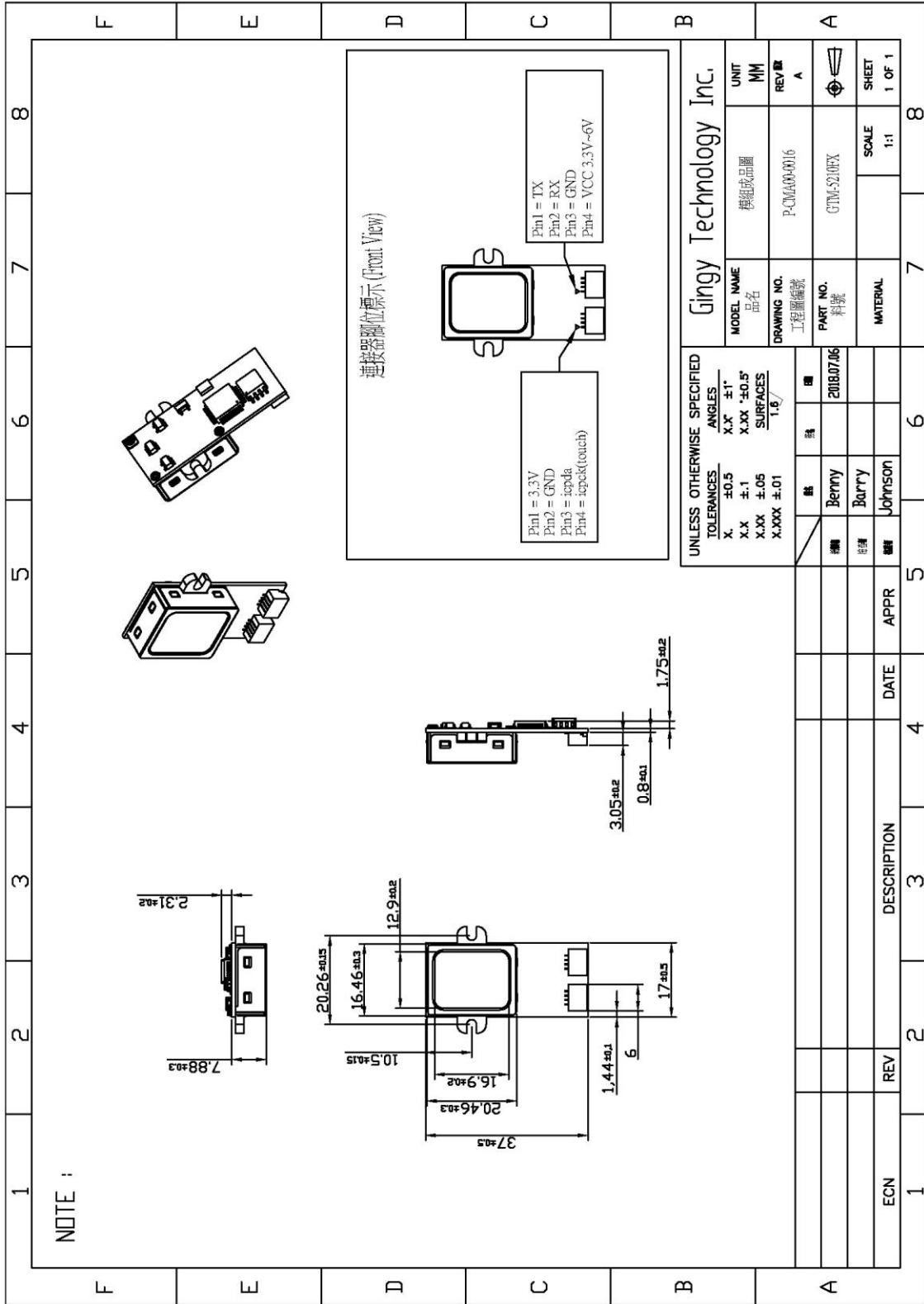
3. Specification

Item	GTM-5210F Series
CPU	ARM Cortex M3 Core (Holtek HT32F22366)
Sensor	GingyTech optical Sensor
Window (mm)	16.9 x 12.9
Effective area of the Sensor (mm)	14 x 12.5
Image Size	258 x 202 Pixels
Resolution	450 dpi
The maximum number of fingerprints	200/3000 fingerprints
Matching Mode	1 : 1 ; 1 : N
The size of template	496 Bytes (template) + 2 Bytes (checksum)
Communication Interface	UART, default baud rate = 9600bps after power on
False Acceptance Rate (FAR)	< 0.001%
False Rejection Rate(FRR)	< 0.1%
Enrollment Time	< 3 sec (3 fingerprints)
Identification Time	< 1.5 sec
Operating Voltage (V)	Power pin DC 3.3~6V TX/RX 3.3V.
Operating Current (mA)	< 130

Touch	Operating Voltage	DC 3.3 V
	Operating Current	< 3mA
	Standby Current	< 5uA
Touch Function		High Active

4. Module Dimension





5.Pin Assignment

Touch IC Connector		
No.	Name	Description
1	VDD	Power voltage that range is 3.3V
2	GND	Ground
3	ICPDA	Program mode : In-circuit programming data/address pin. Normal mode : Active Low. It could be waked-up function from touch IC to $V_{IL} = 0.66V$, $V_{IH} = 2.64V$
4	ICPCK	Program mode : In-circuit programming clock pin Normal mode : Active High. It could be waked-up function from touch IC to $V_{IL} = 0.66V$, $V_{IH} = 2.64V$

UART Connector(Baud rate 9600~115200bps)		
No.	Name	Description
1	TX	Transmitting serial data $V_{IL} = 0.8V$, $V_{IH} = 2V$
2	RX	Receiving serial data $V_{IL} = 0.8V$, $V_{IH} = 2V$
3	GND	Ground
4	VCC	Power voltage that range is from 3.3~6V

6.Part Number

Port Number	The maximum number of fingerprints
GTM-5210F32-01	200
GTM-5210F52-01	3000
GTM-5210F3-01	200
GTM-5210F5-01	3000

	GTM-5210F32-01	GTM-5210F52-01	GTM-5210F3-01	GTM-5210F5-01
Dimension				
Mechanism	Horizontal		Vertical	
Durability	IP56			
LED light	White light			
Touch and wakeup	V			
Fingerprint storage	200	3000	200	3000